



SUSE Linux Enterprise Server 15 SP3

# Repository Mirroring Tool Guide

# Repository Mirroring Tool Guide

SUSE Linux Enterprise Server 15 SP3

An administrator's guide to Repository Mirroring Tool—a proxy system for SUSE Customer Center with repository and registration targets.

Publication Date: September 28, 2024

<https://documentation.suse.com> 

Copyright © 2006–2024 SUSE LLC and contributors. All rights reserved.

Permission is granted to copy, distribute and/or modify this document under the terms of the GNU Free Documentation License, Version 1.2 or (at your option) version 1.3; with the Invariant Section being this copyright notice and license. A copy of the license version 1.2 is included in the section entitled “GNU Free Documentation License”.

For SUSE trademarks, see <https://www.suse.com/company/legal/>. All third-party trademarks are the property of their respective owners. Trademark symbols (®, ™ etc.) denote trademarks of SUSE and its affiliates. Asterisks (\*) denote third-party trademarks.

All information found in this book has been compiled with utmost attention to detail. However, this does not guarantee complete accuracy. Neither SUSE LLC, its affiliates, the authors nor the translators shall be held liable for possible errors or the consequences thereof.

# Contents

## **Preface vii**

- 1 Available documentation vii
- 2 Improving the documentation viii
- 3 Documentation conventions ix
- 4 Support xi
  - Support statement for SUSE Linux Enterprise Server xi • Technology previews xii
- 1 Overview 1**
- 2 RMT installation and configuration 3**
  - 2.1 Storage requirements 3
  - 2.2 Installation during system installation 3
  - 2.3 Installation on an existing system 4
    - Installation on JeOS 4
  - 2.4 RMT configuration with YaST 5
  - 2.5 Enabling SLP announcements 7
- 3 Migrate from SMT to RMT 8**
  - 3.1 Important notes 8
  - 3.2 Exporting SMT data 11
  - 3.3 Importing SMT data to RMT 11
- 4 Mirroring repositories on the RMT server 14**
  - 4.1 Mirroring credentials 14
  - 4.2 Synchronizing repository metadata 15

- 4.3 Mirroring packages 15
- 4.4 Enabling and disabling mirroring of repositories 16
  - Using products 16 • Using repositories 18
- 4.5 Deleting mirrored data 19
- 4.6 Adding custom repositories 20
- 4.7 Exporting and importing repositories 21
- 5 Configuring clients to use RMT 23**
- 5.1 Configuring clients with boot parameters 23
- 5.2 Configuring clients with AutoYaST profile 24
- 5.3 Configuring clients with **rmt-client-setup** 25
- 5.4 Configuring clients with YaST 25
- 5.5 Configuring clients for custom stand-alone repositories 26
- 5.6 Listing accessible repositories 26
- 5.7 Online migration of SUSE Linux Enterprise clients 26
- 6 RMT tools and configuration files 27**
- 6.1 RMT command line interface (**rmt-cli**) 27
  - Overview 27 • **sync** 28 • **products** 28 • **repos** 29 • **repos custom** 29 • **mirror** 30 • **systems** 30 • **import** 31 • **export** 31 • **clean packages** 32 • **version** 32
- 6.2 RMT systemd commands 32
- 6.3 RMT configuration files 33
  - /etc/rmt.conf 33 • SSL certificates and HTTPS 35
- 7 Backing up an RMT server 36**
- 7.1 Creating a backup 36
- 7.2 Restoring a backup 36

<b>8</b>	<b>Managing TLS/SSL certificates</b>	<b>38</b>
8.1	Regenerating HTTPS certificates	38
8.2	Regenerating CA certificates and HTTPS certificates	38
<b>A</b>	<b>GNU licenses</b>	<b>40</b>

# Preface

## 1 Available documentation

### Online documentation

Our documentation is available online at <https://documentation.suse.com>. Browse or download the documentation in various formats.



### Note: Latest updates

The latest updates are usually available in the English-language version of this documentation.

### SUSE Knowledgebase

If you have run into an issue, also check out the Technical Information Documents (TIDs) that are available online at <https://www.suse.com/support/kb/>. Search the SUSE Knowledgebase for known solutions driven by customer need.

### Release notes

For release notes, see <https://www.suse.com/releasesnotes/>.

### In your system

For offline use, the release notes are also available under `/usr/share/doc/release-notes` on your system. The documentation for individual packages is available at `/usr/share/doc/packages`.

Many commands are also described in their *manual pages*. To view them, run `man`, followed by a specific command name. If the `man` command is not installed on your system, install it with `sudo zypper install man`.

## 2 Improving the documentation

Your feedback and contributions to this documentation are welcome. The following channels for giving feedback are available:

### Service requests and support

For services and support options available for your product, see <https://www.suse.com/support/>.

To open a service request, you need a SUSE subscription registered at SUSE Customer Center. Go to <https://scc.suse.com/support/requests>, log in, and click *Create New*.

### Bug reports

Report issues with the documentation at <https://bugzilla.suse.com/>.

To simplify this process, click the *Report an issue* icon next to a headline in the HTML version of this document. This preselects the right product and category in Bugzilla and adds a link to the current section. You can start typing your bug report right away.

A Bugzilla account is required.

### Contributions

To contribute to this documentation, click the *Edit source document* icon next to a headline in the HTML version of this document. This will take you to the source code on GitHub, where you can open a pull request.

A GitHub account is required.



**Note:** *Edit source document* only available for English

The *Edit source document* icons are only available for the English version of each document. For all other languages, use the *Report an issue* icons instead.

For more information about the documentation environment used for this documentation, see the repository's README.

### Mail

You can also report errors and send feedback concerning the documentation to [doc-team@suse.com](mailto:doc-team@suse.com). Include the document title, the product version, and the publication date of the document. Additionally, include the relevant section number and title (or provide the URL) and provide a concise description of the problem.



### 3 Documentation conventions

The following notices and typographic conventions are used in this document:

- `/etc/passwd`: Directory names and file names
- `PLACEHOLDER`: Replace `PLACEHOLDER` with the actual value
- `PATH`: An environment variable
- `ls`, `--help`: Commands, options, and parameters
- `user`: The name of a user or group
- `package_name`: The name of a software package
- `Alt`, `Alt-F1`: A key to press or a key combination. Keys are shown in uppercase as on a keyboard.
- `File`, `File > Save As`: menu items, buttons
- `AMD/Intel` This paragraph is only relevant for the AMD64/Intel 64 architectures. The arrows mark the beginning and the end of the text block. `<`
- `IBM Z, POWER` This paragraph is only relevant for the architectures `IBM Z` and `POWER`. The arrows mark the beginning and the end of the text block. `<`
- *Chapter 1, “Example chapter”*: A cross-reference to another chapter in this guide.
- Commands that must be run with `root` privileges. You can also prefix these commands with the `sudo` command to run them as a non-privileged user:

```
# command  
> sudo command
```

- Commands that can be run by non-privileged users:

```
> command
```

- Commands can be split into two or multiple lines by a backslash character (`\`) at the end of a line. The backslash informs the shell that the command invocation will continue after the line's end:

```
> echo a b \
```

```
c d
```

- A code block that shows both the command (preceded by a prompt) and the respective output returned by the shell:

```
> command  
output
```

- Notices



### Warning: Warning notice

Vital information you must be aware of before proceeding. Warns you about security issues, potential loss of data, damage to hardware, or physical hazards.



### Important: Important notice

Important information you should be aware of before proceeding.



### Note: Note notice

Additional information, for example about differences in software versions.



### Tip: Tip notice

Helpful information, like a guideline or a piece of practical advice.

- Compact Notices



Additional information, for example about differences in software versions.



Helpful information, like a guideline or a piece of practical advice.

## 4 Support

Find the support statement for SUSE Linux Enterprise Server and general information about technology previews below. For details about the product lifecycle, see <https://www.suse.com/lifecycle>.

If you are entitled to support, find details on how to collect information for a support ticket at <https://documentation.suse.com/sles-15/html/SLES-all/cha-adm-support.html>.

### 4.1 Support statement for SUSE Linux Enterprise Server

To receive support, you need an appropriate subscription with SUSE. To view the specific support offers available to you, go to <https://www.suse.com/support/> and select your product.

The support levels are defined as follows:

#### L1

Problem determination, which means technical support designed to provide compatibility information, usage support, ongoing maintenance, information gathering and basic troubleshooting using available documentation.

#### L2

Problem isolation, which means technical support designed to analyze data, reproduce customer problems, isolate a problem area and provide a resolution for problems not resolved by Level 1 or prepare for Level 3.

#### L3

Problem resolution, which means technical support designed to resolve problems by engaging engineering to resolve product defects which have been identified by Level 2 Support.

For contracted customers and partners, SUSE Linux Enterprise Server is delivered with L3 support for all packages, except for the following:

- Technology previews.
- Sound, graphics, fonts, and artwork.
- Packages that require an additional customer contract.

- Some packages shipped as part of the module *Workstation Extension* are L2-supported only.
- Packages with names ending in `-devel` (containing header files and similar developer resources) will only be supported together with their main packages.


SUSE will only support the usage of original packages. That is, packages that are unchanged and not recompiled.

## 4.2 Technology previews

Technology previews are packages, stacks, or features delivered by SUSE to provide glimpses into upcoming innovations. Technology previews are included for your convenience to give you a chance to test new technologies within your environment. We would appreciate your feedback. If you test a technology preview, please contact your SUSE representative and let them know about your experience and use cases. Your input is helpful for future development.

Technology previews have the following limitations:

- Technology previews are still in development. Therefore, they may be functionally incomplete, unstable, or otherwise *not* suitable for production use.
- Technology previews are *not* supported.
- Technology previews may only be available for specific hardware architectures.
- Details and functionality of technology previews are subject to change. As a result, upgrading to subsequent releases of a technology preview may be impossible and require a fresh installation.
- SUSE may discover that a preview does not meet customer or market needs, or does not comply with enterprise standards. Technology previews can be removed from a product at any time. SUSE does not commit to providing a supported version of such technologies in the future.

For an overview of technology previews shipped with your product, see the release notes at <https://www.suse.com/releasenotes> .

# 1 Overview

The Repository Mirroring Tool (RMT) for SUSE Linux Enterprise 15 SP3 allows enterprise customers to optimize the management of SUSE Linux Enterprise software updates and subscription entitlements. It establishes a proxy system for SUSE® Customer Center with repositories and registration targets. This helps you to centrally manage software updates within a firewall on a per-system basis, while maintaining your corporate security policies and regulatory compliance. RMT allows you to provision updates for all of your devices running a product based on SUSE Linux Enterprise. By downloading these updates once and distributing them throughout the enterprise, you can set more restrictive firewall policies. This also reduces bandwidth usage, as there is no need to download the same updates for each device. RMT is fully supported and available as a download for customers with an active SUSE Linux Enterprise product subscription. Repository Mirroring Tool provides functionality that can be useful in many situations, including the following:

- You want to update SUSE Linux Enterprise servers.
- Not all machines in your environment can be connected to SUSE Customer Center to register and retrieve updates for bandwidth or security reasons.
- There are SUSE Linux Enterprise hosts that are restricted and difficult to update without putting in place a custom update management solution.
- You need to integrate additional external or internal repositories.

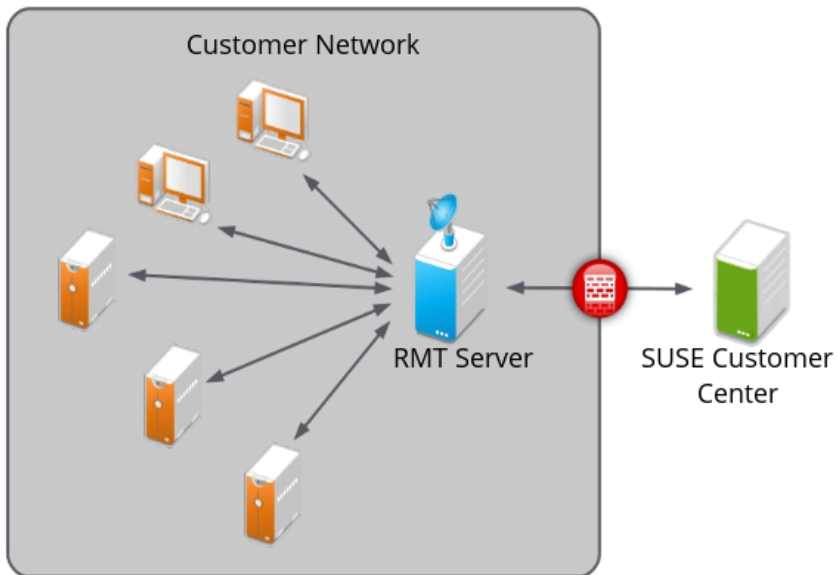


FIGURE 1.1: RMT

RMT replaces SMT (Subscription Management Tool) which was used for SLE 11 and SLE 12. For a feature comparison between RMT and SMT, see [Table 3.1, "Feature comparison"](#).

## 2 RMT installation and configuration

RMT is included in SUSE Linux Enterprise Server starting with version 15. Install RMT directly during the installation of SUSE Linux Enterprise Server or install it on a running system. After the packages are installed, use YaST to do an initial configuration.



### Warning: RMT server will conflict with installation server

Configuring a server to be an RMT server installs and configures the NGINX Web server, listening on port 80.

However, configuring a machine to be an installation server automatically installs the Apache Web server and configures it to listen on port 80.

Do not try to enable both these functions on the same server. It is not possible for a single server to host both simultaneously.

### 2.1 Storage requirements

Downloaded packages are stored in `/usr/share/rmt/public/repo`, which is a symbolic link to `/var/lib/rmt/public/repo/`.

The amount of storage your RMT server requires is dependent on several variables: the number of repositories and architectures that you mirror, and the number of products that are enabled. As a general guide, 1.5 times the total size of all enabled repositories should be sufficient. This is about 200 GB per SUSE Linux Enterprise release, including all extensions.

### 2.2 Installation during system installation

To install it during installation, select the `rmt-server` package. The package selection is available in the *Installation Settings* step of the installation when selecting *Software*.

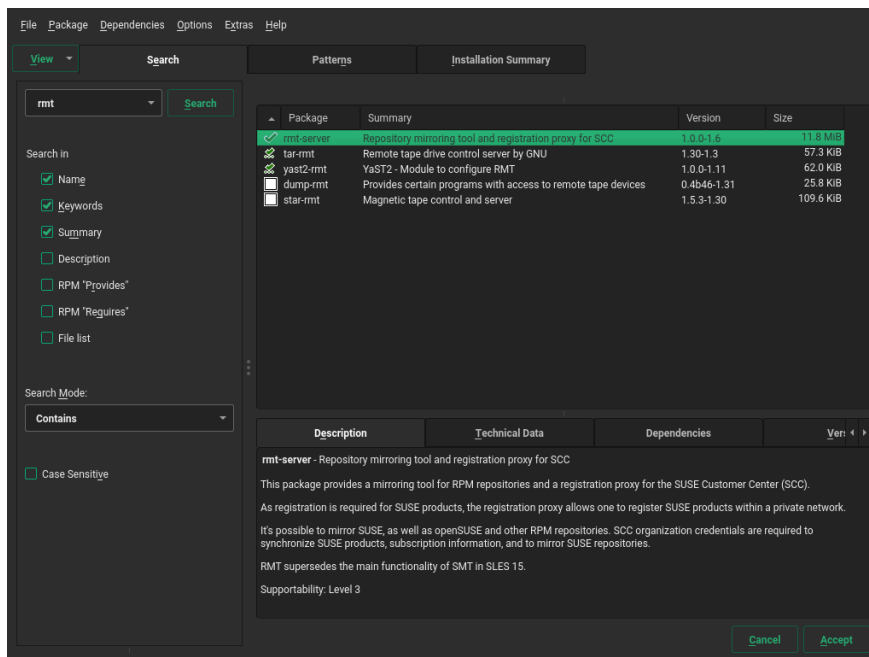


FIGURE 2.1: RMT PATTERN

We recommend to check for available RMT updates immediately after installing SUSE Linux Enterprise Server using the `zypper patch` command. SUSE continuously releases maintenance updates for RMT, and newer packages are likely to be available.

## 2.3 Installation on an existing system

To install RMT on a running SUSE Linux Enterprise Server installation, use `zypper`:

```
> sudo zypper in rmt-server
```

### 2.3.1 Installation on JeOS

SUSE Linux Enterprise Server JeOS (Just enough Operating System) is a minimal customizable operating system that is designed for specific usage scenarios, for example, to be run as:

- A container host
- A virtual machine guest
- An appliance base system
- A small server image



Therefore, JeOS image is a good choice for being used as an RMT server. You can download SUSE Linux Enterprise Server JeOS images for KVM, Xen, Microsoft Hyper-V, VMware, and OpenStack from the public SUSE Linux Enterprise Server download page at <https://www.suse.com/download/sles/>. Find more information on JeOS at <https://documentation.suse.com/sles/15-SP3/html/SLES-all/article-jeos.html>.

The installation of RMT on JeOS works identical to installing it on an already installed system (see [Section 2.3, “Installation on an existing system”](#)). To install RMT on JeOS, run the following command from the JeOS command line as `root`:

```
# zypper install rmt-server yast2-rmt nginx mariadb
```

### ! Important: Hardware requirements

When installing RMT on JeOS, be aware that it requires a minimum of 100 GB disk space, depending on the products you select to mirror. Another requirement is a CPU with at least 2 cores and 2 GB of RAM.

## 2.4 RMT configuration with YaST

Configure RMT with YaST as described in the following procedure. It is assumed that this procedure is executed on a newly installed system.

1. Start YaST with the `rmt` module.

```
> sudo yast2 rmt
```

Alternatively, start YaST and select *Network Services > RMT Configuration*.

2. Enter your organization credentials. To retrieve your credentials, refer to [Section 4.1, “Mirroring credentials”](#).
3. Enter credentials for a new MariaDB user and database name. This user will then be created. Then select *Next*.  
If a password for the MariaDB `root` user is already set, you are required to enter it. If no password is set for `root`, you are asked to enter a new one.
4. Enter a common name for the SSL certificates. The common name should usually be the *fully qualified domain name (FQDN)* of the server. Enter all domain names and IP addresses with which you want to reach the RMT server as alternative common names.

When all common names are entered, select *Next*.

### Tip: Certificate locations for RMT

- `/etc/rmt/ssl/rmt-ca.crt`  
This is the CA certificate bundle that `yast2 rmt` uses to certify the RMT server certificate. `yast2 rmt` will only create this file if it does not already exist.
- `/etc/rmt/ssl/rmt-server.crt` and `/etc/rmt/ssl/rmt-server.key`  
`yast2 rmt` will only generate a new server certificate and private key if one does not already exist. To regenerate this certificate, refer to [Section 8.1, “Regenerating HTTPS certificates”](#).

5. If `firewalld` is enabled on this system, enable the check box to open the required ports.

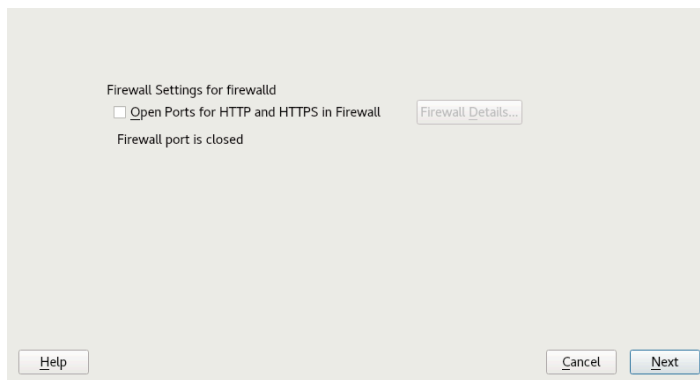


FIGURE 2.2: ENABLING PORTS IN `firewalld`

If `firewalld` is not enabled now and you plan to enable it later, you can always open relevant ports by running the `yast2 rmt` module.

### Tip: Fine-tuning `firewalld` settings

By clicking *Firewall Details*, you can open the relevant ports for specific network interfaces only.

Continue with *Next*.

6. To view the summary, click *Next*. Close YaST by clicking *Finish*. YaST then enables and starts all `systemd` services and timers.

## 2.5 Enabling SLP announcements

RMT includes the SLP service description file `/etc/slp.reg.d/rmt-server.reg`. To enable SLP announcements of the RMT service, follow these steps:

1. If `firewalld` is running, open relevant ports and reload the `firewalld` configuration:

```
> sudo firewall-cmd --permanent --add-port=427/tcp
success
> sudo firewall-cmd --permanent --add-port=427/udp
success
> sudo firewall-cmd --reload
```

2. Verify that SLP server is installed and possibly install it:

```
> sudo zypper install openslp-server
```

3. Enable and start the SLP service:

```
> sudo systemctl enable slpd.service
> sudo systemctl restart slpd.service
```

## 3 Migrate from SMT to RMT

This chapter describes the migration from SMT on SLES 11 or 12 to RMT on SLES 15.

### 3.1 Important notes



#### Warning: Read this section carefully

Carefully read this section. It contains vital information about the migration process.

#### Use new host

We recommend that you install RMT on a newly-installed SLES 15 host. RMT is not a complete replacement for SMT. It has a different workflow than SMT and only supports registering SUSE Linux Enterprise Server 12 systems and newer.

#### Repository metadata and settings

The settings of staged repositories will *not* be exported from SMT. Repositories that have been marked to be mirrored will be exported.

#### Custom repositories

It is only possible to export repositories that are marked for mirroring.

#### Expired subscriptions

Products no longer available on the organization subscriptions will not be available on RMT.

#### Client information

Systems and their activated products will be exported. SMT client jobs and patch status will not be exported from SMT.

TABLE 3.1: FEATURE COMPARISON

Feature	SMT	RMT
Available on SLES 11	yes	no
Available on SLES 12	yes	no
Available on SLES 15	no	yes

Feature	SMT	RMT
Synchronize products with SUSE Customer Center	yes	yes
Mirror RPMs from repositories	yes	yes
Selective mirroring (specifying products to mirror)	yes	yes
Serve RPMs via HTTP	yes	yes
Registration of SLE 15 systems	yes	yes
Registration of SLE 12 systems	yes	yes
Registration of SLE 11 systems	yes	no
Red Hat 6 and earlier support	yes <sup>1</sup>	no
Red Hat 7+ support	yes <sup>1</sup>	yes <sup>1</sup>
Support for migrating SLE 12 to 15	yes <sup>2</sup>	yes
Support for migrating SLE 15 SPx to 15 SPx + 1	yes <sup>2</sup>	yes
Staging repositories	yes	no <sup>3</sup>
Offline mirroring	yes	yes
NTLM Proxy support	yes	yes
Custom repositories	yes	yes
YaST installation wizard	yes	yes
YaST management wizard	yes	no
Client management	yes	no
Files deduplication	yes	yes

Feature	SMT	RMT
Data transfer from SMT to RMT	n/a	yes
Transfer registration data to SUSE Customer Center	yes	yes
Reporting	yes	no
Custom TLS certificates for Web server	yes	yes
Clean up data from repositories that are not used any longer	yes	yes
Bash completion	no	yes
Available on <a href="https://github.com/SUSE/rmt/blob/master/docs/installation.md#installation-on-opensuse-leap-15">openSUSE Leap 15</a> ( <a href="https://github.com/SUSE/rmt/blob/master/docs/installation.md#installation-on-opensuse-leap-15">https://github.com/SUSE/rmt/blob/master/docs/installation.md#installation-on-opensuse-leap-15</a> ) ↗	no	yes <sup>4</sup>
Easy development setup + <a href="https://github.com/SUSE/rmt/blob/master/docs/CONTRIBUTING.md">contribution guide</a> ( <a href="https://github.com/SUSE/rmt/blob/master/docs/CONTRIBUTING.md">https://github.com/SUSE/rmt/blob/master/docs/CONTRIBUTING.md</a> ) ↗	no	yes
100% test coverage ( <a href="https://coveralls.io/github/SUSE/rmt?branch=master">https://coveralls.io/github/SUSE/rmt?branch=master</a> ) ↗	no	yes
Plugin functionality ( <a href="https://github.com/SUSE/rmt/blob/master/docs/PLUGINS.md">https://github.com/SUSE/rmt/blob/master/docs/PLUGINS.md</a> ) ↗	no	yes
Web server	Apache2	Nginx
Platform	Perl	Ruby

Feature	SMT	RMT
Clean up data from repositories that are no longer used	yes	yes
Bash completion	no	yes

1. Support via SUSE Liberty Linux, find more details in <https://www.suse.com/products/suse-liberty-linux/>.
2. SMT only partially supports migrating systems to SLE 15. SLE 15 is composed of multiple modules and extensions. Some modules are not required, as they provide additional functionality. RMT fully supports migrations into and within SLE 15, therefore it only adds the minimum of required modules. SMT does not fully support these migrations, and it enables all available modules on the system.
3. Functionality is offered by SUSE Manager (<https://documentation.suse.com/suma/>).
4. Only available with self-support (<https://www.suse.com/support/self-support/>).

## 3.2 Exporting SMT data

### PROCEDURE 3.1: EXPORT SMT DATA

1. Update your SMT server installation by running `zypper up`.
2. If you want to export your SSL certificates along with the rest of the data, run `smt-data-export`. Remember to keep your certificates in a safe place.  
If you do not want to export the SSL certificates from SMT, run `smt-data-export --no-ssl-export`.
3. The exported configuration is now saved to `smt-data-export.TIMESTAMP.tar.gz`. Copy the file to a location that can be accessed by the new RMT server.

## 3.3 Importing SMT data to RMT

1. To make sure your RMT installation is up to date, run `zypper up`.

2. Copy the exported `.tar.gz` file to an empty directory and unpack it. Then enter the new directory:

```
> mkdir EMPTY_DIR
> cd EMPTY_DIR
> tar xf /PATH/TO/smt-data-export.TIMESTAMP.tar.gz
> cd smt-data-export
```

3. If you chose to export the SSL certificates from SMT, copy the CA private key and certificate to `/etc/rmt/ssl/`:

```
> sudo cp ssl/cacert.key /etc/rmt/ssl/rmt-ca.key
> sudo cp ssl/cacert.pem /etc/rmt/ssl/rmt-ca.crt
```

4. Run the YaST RMT configuration module as described in [Section 2.4, "RMT configuration with YaST"](#). If you imported the SMT CA certificate, add the domain of the SMT server to the common names of the new SSL certificate.

5. Run the RMT synchronization to get the products and repositories data from SUSE Customer Center.

```
> sudo rmt-cli sync
```

6. Import the data from the SMT server.

```
> sudo rmt-data-import -d ./
```

7. Optional: If the URL of the RMT server changed, change the URL parameter of clients in `/etc/SUSEConnect` to point to the new RMT server. Alternatively, change the DNS records to re-assign the host name to the RMT server.

8. Optional: Move the mirrored repository data from SMT to RMT, and adjust the ownership of the copied data.

```
> sudo cp -r /var/www/htdocs/repo/* /usr/share/rmt/public/repo/
> sudo chown -R _rmt:nginx /usr/share/rmt/public/repo
```



## Tip

The path for storing custom repositories' data on the RMT server is different from that of SMT. With RMT, it replicates the directory structure of the source server's URL into a top level directory. For example, if the URL of the custom repository is



```
http://download.opensuse.org/debug/distribution/leap/15.3/repo/oss
```

its path on the RMT server will be

```
/usr/share/rmt/public/repo/debug/distribution/leap/15.3/repo/oss
```

9. Custom repositories on the SMT server are disabled by default. If you want to mirror them to the RMT, enable them before mirroring.

a. Check for custom repositories by running:

```
> sudo rmt-cli repos custom list
```

A table of all custom repositories will be shown. The first column contains the ID of each repository and the Mirror? column will show false.

b. Enable each custom repository you want to mirror by running:

```
> sudo rmt-cli repos custom enable ID
```

10. Update the packages in the repositories by starting the mirroring process:

```
> sudo rmt-cli mirror
```

## 4 Mirroring repositories on the RMT server

You can mirror the installation and update repositories on the RMT server. This way, you do not need to download updates on each machine, which saves time and bandwidth.

In its default configuration, RMT mirrors enabled product repositories automatically once every night.

By default, the mirrored repositories are stored in `/var/lib/rmt/public/repo`.



### Note: Change default location of the mirrored repositories

To change the default location of the mirrored repositories, point the `/usr/share/rmt/public/repo` symbolic link to the desired directory. This can be done using the command:

```
ln -sfn TARGET /usr/share/rmt/public/repo
```

(Replace `TARGET` with the desired destination). Make sure that the target has read and write permissions for the `rmt` user and `nginx` group.

When enabled repositories are fully mirrored, you can register your client systems against RMT by running `SUSEConnect --url https://RMT_HOSTNAME` on the client machine. After successful registration, the repositories from the RMT server will be used by Zypper on the client machine.



### Important: SUSE Linux Enterprise Server 11 clients


RMT does not support clients with SUSE Linux Enterprise Server versions 11 and below.

## 4.1 Mirroring credentials

Before you create a local mirror of the SUSE Linux Enterprise repositories, you need appropriate organization credentials. You can obtain the credentials from SUSE Customer Center.

To get the credentials from SUSE Customer Center, follow these steps:

1. Visit SUSE Customer Center at <http://scc.suse.com> and log in.
2. If you are a member of multiple organizations, select the organization you want to work with from the sidebar on the left.

3. Select *Proxies* in the top menu.
4. The credentials are displayed in the top right corner.
5. To see the password, click the  icon.

The obtained credentials should be set with the YaST RMT Server Configuration module or added directly to the `/etc/rmt.conf` file. For more information about the `/etc/rmt.conf` file, see [Section 6.3.1, “/etc/rmt.conf”](#).

## 4.2 Synchronizing repository metadata

The local RMT database needs to be updated periodically with the information downloaded from SUSE Customer Center. This includes information about available products and repositories.

The synchronization is activated by the `systemd` timer `rmt-server-sync.timer`. To view its status, for example, the next running time, use `systemctl status`.

```
> sudo systemctl status rmt-server-sync.timer
● rmt-server-sync.timer - RMT Sync timer
   Loaded: loaded (/usr/lib/systemd/system/rmt-server-sync.timer; enabled; vendor preset: disabled)
   Active: active (waiting) since Fri 2018-06-22 04:22:34 EDT; 2h 34min ago
   Trigger: Sat 2018-06-23 03:53:00 EDT; 20h left

Jun 22 04:22:34 d31 systemd[1]: Started RMT Sync timer.
```

If the timer is not enabled or started, start it manually.

```
> sudo systemctl enable --now rmt-server-sync.timer
```

To update the RMT database manually, use the `rmt-cli sync` command. For details, see [Section 6.1.2, “sync”](#).

## 4.3 Mirroring packages

Packages for enabled repositories are mirrored on your RMT server. Packages are downloaded periodically once a day. But the download can also be triggered manually at any time.

The periodic mirroring is activated by the `systemd` timer `rmt-server-mirror.timer`. To show its status, for example, the next running time, use `systemctl status`.

```
# systemctl status rmt-server-mirror.timer
● rmt-server-mirror.timer - RMT Mirror timer
   Loaded: loaded (/usr/lib/systemd/system/rmt-server-mirror.timer; enabled; vendor
   preset: disabled)
   Active: active (waiting) since Fri 2018-06-22 04:22:34 EDT; 2h 34min ago
   Trigger: Sat 2018-06-23 02:17:57 EDT; 19h left

Jun 22 04:22:34 d31 systemd[1]: Started RMT Mirror timer.
```

If the timer is not enabled or started, start it manually.

```
> sudo systemctl enable --now rmt-server-mirror.timer
```

To update the mirrored packages manually, use the `rmt-cli mirror` command. For details, see [Section 6.1.6, “mirror”](#).

## 4.4 Enabling and disabling mirroring of repositories

Mirroring of repositories can be enabled or disabled individually or by stating a product. You can specify one or more repositories or products at once. When repositories are enabled, their packages are downloaded and updated during the mirroring process. To enable or disable mirroring of repositories, you either need the product string or ID, or the repository name or ID. In general, enabling or disabling a product is desired, because this automatically enables or disables all repositories associated with the product.

### 4.4.1 Using products

To enable or disable all repositories of a product, use the `rmt-cli products enable ID` and `rmt-cli products disable ID` commands. To retrieve an ID for an enabled product, use the `rmt-cli products list` command. To retrieve an ID for a disabled but available product, use the `rmt-cli products list --all` command.

Example:

```
> sudo rmt-cli products list --all
+-----+-----+-----+-----+-----+-----+
| ID   | Product                | Version | Arch  | Mirror?   | Last mirrored |
+-----+-----+-----+-----+-----+-----+
[... ]
| 1743 | SUSE Package Hub      | 15      | x86_64 | Don't Mirror |               |
|     | PackageHub/15/x86_64 |         |        |              |               |
```

[...]

```
> sudo rmt-cli products enable 1743
```

```
Found product by target 1743: SUSE Package Hub 15 x86_64.
```

```
Enabling SUSE Package Hub 15 x86_64:
```

```
SUSE Package Hub 15 x86_64:
```

```
Enabled repository SLE-Module-Packagehub-Subpackages15-Pool.
```

```
Enabled repository SLE-Module-Packagehub-Subpackages15-Updates.
```

```
Enabled repository SUSE-PackageHub-15-Pool.
```

```
Enabled repository SUSE-PackageHub-15-Standard-Pool..
```

```
> sudo rmt-cli products disable 1743
```

```
Found product by target 1743: SUSE Package Hub 15 x86_64.
```

```
Disabling SUSE Package Hub 15 x86_64:
```

```
SUSE Package Hub 15 x86_64:
```

```
Disabled repository SLE-Module-Packagehub-Subpackages15-Pool.
```

```
Disabled repository SLE-Module-Packagehub-Subpackages15-Updates.
```

```
Disabled repository SUSE-PackageHub-15-Pool.
```

```
Disabled repository SUSE-PackageHub-15-Standard-Pool..
```

To clean up downloaded files, run 'rmt-cli repos clean'



## Tip: Enabling and disabling multiple products at once

To enable or disable multiple products at once, specify a space-delimited list of their IDs or product strings, for example:

```
> sudo rmt-cli products enable 1743 SLES/15/x86_64 SLES/12
```

```
Found product by target 1743: SUSE Package Hub 15 x86_64.
```

```
Enabling SUSE Package Hub 15 x86_64:
```

```
SUSE Package Hub 15 x86_64:
```

```
Enabled repository SLE-Module-Packagehub-Subpackages15-Pool.
```

```
Enabled repository SLE-Module-Packagehub-Subpackages15-Updates.
```

```
Enabled repository SUSE-PackageHub-15-Pool.
```

```
Enabled repository SUSE-PackageHub-15-Standard-Pool.
```

```
Found product by target SLES/15/x86_64: SUSE Linux Enterprise Server 15 x86_64.
```

```
Enabling SUSE Linux Enterprise Server 15 x86_64:
```

```
SUSE Linux Enterprise Server 15 x86_64:
```

```
Enabled repository SLE-Product-SLES15-Pool.
```

```
Enabled repository SLE-Product-SLES15-Updates.
```

```
Enabled repository SLE15-Installer-Updates.
```

```
Basesystem Module 15 x86_64:
```

```
Enabled repository SLE-Module-Basesystem15-Pool.
```

```
Enabled repository SLE-Module-Basesystem15-Updates.
```

```
Server Applications Module 15 x86_64:
```

```
Enabled repository SLE-Module-Server-Applications15-Pool.
```

```
Enabled repository SLE-Module-Server-Applications15-Updates.
Found product by target SLES/12: SUSE Linux Enterprise Server 12 x86_64.
Enabling SUSE Linux Enterprise Server 12 x86_64:
  SUSE Linux Enterprise Server 12 x86_64:
    Enabled repository SLES12-Pool.
    Enabled repository SLES12-Updates.
```

## 4.4.2 Using repositories

To enable or disable mirroring of specific repositories, use the `rmt-cli repos enable ID` and `rmt-cli repos disable ID` commands. To retrieve an ID for an enabled repository, use the `rmt-cli repos list` command. To retrieve an ID for a disabled but available repository, use the `rmt-cli repos list --all` command.

Example:

```
> sudo rmt-cli repos list --all
+-----+-----+-----+
| ID      | Name                | Description                |
+-----+-----+-----+
[...]
| 3061    | SUSE-PackageHub-15-Pool | SUSE-PackageHub-15-Pool for sle-15-x86_64 |
| [...]  |                         |                         |
+-----+-----+-----+

> sudo rmt-cli repos enable 3061
Repository by ID 3061 successfully enabled.

> sudo rmt-cli repos disable 3061
Repository by ID 3061 successfully disabled.

To clean up downloaded files, please run 'rmt-cli repos clean'
```



**Tip:** Enabling and disabling multiple repositories at once

To enable or disable multiple repositories at once, specify a space-delimited list of their IDs, for example:

```
> sudo rmt-cli repos enable 2526 3263
Repository by ID 2526 successfully enabled.
Repository by ID 3263 successfully enabled.
```

```
> sudo rmt-cli repos disable 2526 3263
Repository by ID 2526 successfully disabled.
Repository by ID 3263 successfully disabled.

To clean up downloaded files, run 'rmt-cli repos clean'
```

## 4.5 Deleting mirrored data

After you disable the mirroring of a repository or product as described in [Section 4.4, “Enabling and disabling mirroring of repositories”](#), the mirrored data still remains on your local hard disk. This includes the mirrored RPM packages.

To delete disabled repository data, use the command `rmt-cli repos clean`. With this command, RMT verifies that only enabled repositories are mirrored and provides a way to delete invalid data.

Before removing any data, the command lists the affected repositories and requires the user to input `yes` to continue.

```
> sudo rmt-cli repos clean
RMT found locally mirrored files from the following repositories which are not marked to
be mirrored:

SLE-Product-SLES15-Updates for sle-15-x86_64
SLE-Product-SLES15-Pool for sle-15-x86_64
SLE15-Installer-Updates for sle-15-x86_64

Would you like to continue and remove the locally mirrored files of these repositories?
Only 'yes' will be accepted.

Enter a value: yes

Deleted locally mirrored files from repository 'SLE-Product-SLES15-Updates for sle-15-
x86_64'.
Deleted locally mirrored files from repository 'SLE-Product-SLES15-Pool for sle-15-
x86_64'.
Deleted locally mirrored files from repository 'SLE15-Installer-Updates for sle-15-
x86_64'.

Clean finished. An estimated 157 MB were removed.
```



## Tip: Manually remove repository data

To delete disabled repository data, manually remove its corresponding directory:

```
> sudo rm -r /usr/share/rmt/public/repo/SUSE/Products/PRODUCT/VERSION/ARCHITECTURE/
```

## 4.6 Adding custom repositories

You can mirror custom repositories with the RMT server. These repositories are not provided by the SUSE Customer Center. Repositories can be provided by, for example, the Open Build Service, third-party vendors, or created with [createrepo](#).

Custom repositories can either be stand-alone, or you can attach them to products. This allows you to connect multiple repositories with one command on a client registered to the RMT server.

The following example procedure illustrates the mirroring of a third-party repository.

1. Add the remote repository to the RMT server. Replace URL with the URL to the repository. Replace NAME with a name of your choice for the repository.

```
# rmt-cli repos custom add URL NAME
```

2. List all custom repositories to get the ID of the new repository.

```
# rmt-cli repos custom list
```

3. Optionally attach the new custom repository to a product. For example, if the new custom repository is required by all desktop clients, it can be attached to the SUSE Linux Enterprise Desktop product.

```
# rmt-cli repos custom attach REPOSITORY_ID PRODUCT_ID
```

Replace REPOSITORY\_ID with the ID of the new custom repository. Replace PRODUCT\_ID with the ID of a product you want the repository to be attached to. If you need to retrieve the PRODUCT\_ID, use the command `rmt-cli products list --all`.





## Important

When custom repositories are attached to a product, clients registering with that product will have such repository added in a disabled state. To enable the repository, find its ID with the command `zypper lr` and run:

```
# zypper mr -e REPO_ID
```

4. Enable mirroring of the new custom repository.

```
# rmt-cli repos custom enable REPOSITORY_ID
```

To get a list of all available custom repositories commands, see [Section 6.1.4, “repos”](#).

## 4.7 Exporting and importing repositories

RMT has built-in functions to import and export data about available repositories and the mirrored packages. For example, this can be used to speed up the setup of a new RMT server by locally copying already mirrored RPM packages.

Another use case is the *offline mode*. It allows the transfer of data to a disconnected RMT server, for example to provide updates to computers in an air-gapped network.

The following procedure describes the transfer of data and mirrored RPMs between two RMT servers with a USB drive. The server `sun` is connected to the SUSE Customer Center, while `sirius` is a server in an air-gapped network.

1. Log in on the server `sun`.

```
root@sun # rmt-cli sync
root@sun # rmt-cli mirror
```

2. Connect a USB drive, assumed to be `/dev/sdb` and mount it, for example in `/mnt/external`.

```
root@sun # mount /dev/sdb1 /mnt/external
```

3. a. Export the data about available repositories and products.

```
root@sun # rmt-cli export data /mnt/external/
```

- b. Export the list of enabled repositories. The exported file is required for exporting the repositories in the next step.

```
root@sun # rmt-cli export settings /mnt/external/
```

- c. Export mirrored RPM packages. Depending on the size of mirrored repositories, this can take a long time.

```
root@sun # rmt-cli export repos /mnt/external/
```

4. Unmount and unplug the disk from sun and go to sirius.

```
root@sun # umount /mnt/external
```

5. If not yet done, set up RMT on sirius by running the **yast2 rmt**. In case of an offline RMT setup, select *Skip* on the *Organization Credentials* screen.

6. Connect the USB drive to sirius and mount it in /mnt/external.

```
root@sirius # mount /dev/sdb1 /mnt/external
```

7.
  - a. Import the meta data about available repositories and products.

```
root@sirius # rmt-cli import data /mnt/external/
```

- b. Import mirrored RPM packages. Depending on the size of mirrored repositories, this can take a long time.

```
root@sirius # rmt-cli import repos /mnt/external/
```

8. Enable repositories as required on the sirius. For details, see [Section 4.4, "Enabling and disabling mirroring of repositories"](#).



### Note: Exporting enabled settings from air-gapped server

If your air-gapped server (sirius) has many enabled repositories, or if the enabled repositories change frequently, we recommend to export the repository settings from this server.

The server connected to the SUSE Customer Center (sun) can then import the exported settings. This ensures that sun downloads all data required by sirius.

## 5 Configuring clients to use RMT

Any machine running SUSE Linux Enterprise 12 or newer can be configured to register against RMT and download software updates from there, instead of communicating directly with the SUSE Customer Center.



### Tip: Register with RMT server over HTTP

We recommend registering with the RMT server over a secured HTTPS protocol (all examples in this documentation use it). However, you can also register with the RMT server over an insecure HTTP protocol. Use this approach only if your setup benefits from it **and** only in a trusted environment where security is not crucial.

To configure clients to use the RMT server, use one of the following methods:

- Provide the required information with boot parameters. See [Section 5.1, “Configuring clients with boot parameters”](#).
- Configure the clients using an AutoYaST profile. See [Section 5.2, “Configuring clients with AutoYaST profile”](#).
- Use the `rmt-client-setup` command. See [Section 5.3, “Configuring clients with rmt-client-setup”](#).
- Use the YaST registration module during installation or later. See [Section 5.4, “Configuring clients with YaST”](#).



### Tip: CA certificate

If you need the CA certificate of the RMT server, find it at `/etc/rmt/ssl/rmt-ca.crt` and [https://RMT\\_SERVER/rmt.crt](https://RMT_SERVER/rmt.crt).

## 5.1 Configuring clients with boot parameters

Any client can be configured to use RMT by providing the `regurl` parameter during machine boot.

The parameter needs to be entered as `regurl=RMT_SERVER_URL`. The URL needs to be in the following format: `https://FQDN` with `FQDN` being the fully qualified host name of the RMT server. It must be identical to the FQDN of the server certificate used on the RMT server. Example:

```
regurl=https://rmt.example.com
```



### Warning: Beware of typing errors

Make sure the values you enter are correct. If `regurl` has not been specified correctly, the registration of the update source will fail.



### Note: Change of RMT server certificate

If the RMT server gets a new certificate from an untrusted CA, the clients need to retrieve the new CA certificate file. YaST displays a dialog for importing a new certificate. If you confirm importing the new certificate, the old one is replaced with the new one.

## 5.2 Configuring clients with AutoYaST profile

Clients can be configured to register with RMT server via AutoYaST profile. For general information about creating AutoYaST profiles and preparing automatic installation, refer to the *AutoYaST Guide*. In this section, only RMT specific configuration is described.

To configure RMT specific data using AutoYaST, follow the steps for the relevant version of RMT client.

1. As `root`, start YaST and select *Miscellaneous > Autoinstallation* to start the graphical AutoYaST front-end.  
From a command line, you can start the graphical AutoYaST front-end with the `yast2 autoyast` command.
2. Open an existing profile using *File > Open*, create a profile based on the current system's configuration using *Tools > Create Reference Profile*, or work with an empty profile.
3. Select *Software > Product Registration*. An overview of the current configuration is shown.
4. Click *Edit*.

5. Check *Register the Product*, set the URL of the RMT server in *Use Specific Server URL Instead of the Default*, and you can set the *Optional SSL Server Certificate URL*. The possible values for the server URL are the same as for the kernel parameter `regurl`. For the SSL certificate location, you can use either HTTP or HTTPS based URLs.
6. Perform all other configuration needed for the systems to be deployed, then click *Finish* to return to the main screen.
7. Select *File > Save As* and enter a file name for the profile, such as `autoinst.xml`.

## 5.3 Configuring clients with `rmt-client-setup`

The `/usr/share/rmt/public/tools/rmt-client-setup` script is provided in the package `rmt-server`. This script allows you to configure a client machine to use an RMT server. It can also be used to reconfigure an existing client to use a different RMT server.

To configure a client machine to use RMT with `rmt-client-setup`, follow these steps:

1. Download `rmt-client-setup` from the RMT server:

```
# curl http://RMT_SERVER/tools/rmt-client-setup --output rmt-client-setup
```

2. Run the script with the URL of the RMT server as parameter.

```
# sh rmt-client-setup https://RMT_SERVER/
```

Executing this script will import the RMT CA's certificate into the trusted store.

Alternatively, you can specify the correct fingerprint or path to the server certificate. For details, see `sh rmt-client-setup --help`.

3. The script downloads the server's CA certificate. Accept it by pressing `Y`. The tool now performs all necessary modifications on the client.
4. Use `SUSEConnect` to add more products. For details, run `SUSEConnect --help`.

## 5.4 Configuring clients with YaST

To configure a client to perform the registration against an RMT server use the YaST *Product Registration* module `yast2 registration`.

On the client, the credentials are not necessary and you may leave the relevant fields empty. Click *Local Registration Server* and enter its URL. Then click *Next* until the exit from the module.

## 5.5 Configuring clients for custom stand-alone repositories

If you created a custom stand-alone repository on the RMT server, it will not be registered on client machines with **SUSEConnect** because it has no parent product.

To add the repository manually, follow these steps:

1. Point your Web browser to the following RMT server URL:

```
https://RMT_SERVER_HOSTNAME/repo/
```

2. Navigate the browser through the directory structure to your custom repository's `repo-data/` subdirectory.
3. On the client machine, add the discovered repository URL:

```
> sudo zypper ar CUSTOM_REPO_URL CUSTOM_REPO_NAME
```

## 5.6 Listing accessible repositories

To list available modules and repositories, use **SUSEConnect --list-extensions**. Alternatively, you can also browse the directory listing of the RMT server by visiting `https://RMT_SERVER/repo/` and its subdirectories.

## 5.7 Online migration of SUSE Linux Enterprise clients

SUSE Linux Enterprise clients registered against RMT can be migrated online to the latest service pack of the same major release the same way as clients registered against SUSE Customer Center. Before starting the migration, make sure that RMT has the required products available and mirrored.

For detailed information on the online migration, see *Book "Upgrade Guide", Chapter 1 "Upgrade paths and methods"*.

## 6 RMT tools and configuration files

This chapter describes the most important scripts, configuration files and certificates shipped with RMT.

The `rmt-cli` command and its sub-commands are used to manage the mirroring of repositories, registration of clients, and reporting. `systemd` is used for starting, stopping, restarting the RMT service and for checking its status.

The basic configuration for RMT is stored in the `/etc/rmt.conf`.

### 6.1 RMT command line interface (`rmt-cli`)

#### 6.1.1 Overview

The key command to manage the RMT is `rmt-cli` (`/usr/bin/rmt-cli`). The `rmt-cli` command should be used together with the sub-commands described in this section. If the `rmt-cli` command is used alone, it prints a list of all available sub-commands. To get help for individual sub-commands, use `man rmt-cli` or `rmt-cli help [subcommand]`.

The following sub-commands are available:

##### `rmt-cli sync`

Synchronize database with SUSE Customer Center.

##### `rmt-cli products`

List and modify products.

##### `rmt-cli repos`

List and modify repositories.

##### `rmt-cli mirror`

Mirror repositories.

##### `rmt-cli systems`

List and modify systems.

##### `rmt-cli import`

Import commands for the offline mode.

### **rmt-cli export**

Export commands for the offline mode.

### **rmt-cli version**

Show RMT version.

The following sections explain each sub-command in detail.

## 6.1.2 **sync**

This command triggers synchronization with the SUSE Customer Center instantly. The command has no further options. Synchronization is also triggered each night by the `systemd` timer `rmt-server-sync.timer`.

During synchronization, no data is uploaded to the SUSE Customer Center. This command for example updates local product definitions and repository data.

## 6.1.3 **products**

List and modify products.

### **rmt-cli products list [--all] [--csv]**

Lists the products that are enabled for mirroring. Use the `--all` flag to list all available products. Use the `--csv` flag to output the list in CSV format. `ls` can be used as a shortcut for `list`.

### **rmt-cli products enable [id | string] [--all-modules]**

Enables mandatory repositories of a product by its ID or product string. The `--all-modules` flag enables all modules of a product instead of only the recommended ones.

### **rmt-cli products disable [id | string]**

Disables all repositories of a product by its ID or product string.



## 6.1.4 repos

### **rmt-cli repos list [--all] [--csv]**

Lists the repositories that are enabled for mirroring. Use the `--all` flag to list all available repositories. Use the `--csv` flag to output the list in CSV format. `ls` can be used as a shortcut for `list`.

### **rmt-cli repos enable [id]**

Enables mirroring of a single repository by its ID.

### **rmt-cli repos disable [id]**

Disables mirroring of a single repository by its ID.

### **rmt-cli repos clean**

This command removes locally mirrored files of repositories that are not marked to be mirrored.

## 6.1.5 repos custom

### **rmt-cli repos custom list [--csv]**

Lists all your custom repositories. Use the `--csv` flag to output the list in CSV format. `ls` can be used as a shortcut for `list`.

### **rmt-cli repos custom add [url] [name] [--id]**

Adds a new custom repository. Use the `--id` flag to specify a custom alphanumeric ID.

### **rmt-cli repos custom enable [id]**

Enables mirroring of a custom repository.

### **rmt-cli repos custom disable [id]**

Disables mirroring of a custom repository.

### **rmt-cli repos custom remove [id]**

Removes a custom repository.

### **rmt-cli repos custom products [id]**

Lists the products attached to the custom repository with the given ID.

### **rmt-cli repos custom attach [id] [product id]**

Attaches an existing custom repository to a product.

### **`rmt-cli repos custom detach [id] [product id]`**

Detaches an existing custom repository from a product.

## 6.1.6 **mirror**

### **`rmt-cli mirror`**

This command starts the mirroring process manually.

### **`rmt-cli mirror all`**

This command mirrors all enabled repositories.

### **`rmt-cli mirror repository [IDs]`**

This command mirrors enabled repositories by a list of IDs.

### **`rmt-cli mirror product [IDs]`**

This command mirrors enabled repositories for a product by a list of IDs.

## 6.1.7 **systems**

### **`rmt-cli systems list`**

This command lists registered systems.

### **`rmt-cli systems scc-sync`**

This command forwards registered systems' data to SCC.

### **`rmt-cli systems remove [TARGET]`**

This command removes a system from RMT as identified by the *Login* column of the output of the `rmt-cli systems list` command.

### **`rmt-cli systems purge`**

This command lists and optionally deletes inactive systems. It has the following options:

- `--before DATE`—lists systems that have been inactive since `DATE` until now. Default is the last 3 months.
- `--no-confirmation`—allows the administrator to delete matching systems without confirmation.

```
# rmt-cli systems purge --before 2021-06-16
```

```

+-----+-----+-----+-----+-----+
| Login      | Hostname | Registration time | Last seen          | Products |
+-----+-----+-----+-----+-----+
| SCC_c5b0.. | 6e485e48b| 2021-06-11 13:38:07 | 2021-06-11 13:52:01 | SLES/15..|
| SCC_5fcf.. | node52   | 2021-06-15 13:29:24 | 2021-06-15 13:31:25 | SLES/15..|
+-----+-----+-----+-----+-----+
Do you want to delete these systems? (y/n) y
Purged systems that have not contacted this RMT since 2021-06-16.

```

## 6.1.8 import

This command is required for the *offline mode*. For details, see [Section 4.7, “Exporting and importing repositories”](#).

### **rmt-cli import data [path]**

Run this on the offline RMT to read the JSON files from the given path and fill the local database with data.

### **rmt-cli import repos [path]**

Run this on the offline RMT to import RPM packages.

## 6.1.9 export

This command is required for the *offline mode*. For details, see [Section 4.7, “Exporting and importing repositories”](#).

### **rmt-cli export data [path]**

Run this on an online RMT to get the latest data from SUSE Customer Center and save the result as JSON files at the specified path.

### **rmt-cli export settings [path]**

Run this on the offline RMT to save the settings for enabled repositories at a given path as `repos.json`.

### **rmt-cli export repos [path]**

Run this regularly on the online RMT to mirror the set of repositories specified in the `repos.json` at the given path. The mirrored repository files are stored in subdirectories of the same path.

## 6.1.10 **clean packages**

The `rmt-cli clean packages` command removes locally mirrored “dangling” files and their database entries. A file is considered to be dangling if it matches all the following characteristics:

- It exists in a repository directory with primary and metadata `repomd.xml` files.
- It is no longer referenced in the metadata files.
- It is at least 2 days old.

You can pass the following options to the `rmt-cli clean packages` command:

### `--dry-run`

Generates a report of all affected files without actually cleaning them or their database entries.

### `--verbose`

Prints detailed information about each cleaned file.

### `--non-interactive`

Skips confirmation before proceeding with the cleaning process.

## 6.1.11 **version**

Display the version of `rmt-cli`.

## 6.2 **RMT systemd commands**

You can manage RMT-related services with the standard `systemd` commands. The RMT server has the following services and timers:

### `rmt-server.target`

A `systemd` target that starts all required RMT components.

### `rmt-server.service`

The RMT server.

### `rmt-server-migration.service`

This service migrates the database to the newest schema, if required. There is no need to manually interact with this service.

### rmt-server-sync.timer

This timer is responsible for periodically synchronizing all repository product data from the SUSE Customer Center.

### rmt-server-mirror.timer

This timer is responsible for periodically synchronizing all RPMs from the SUSE Customer Center.

Use **systemctl** to control the RMT services and timers.

## 6.3 RMT configuration files

The main RMT configuration file is /etc/rmt.conf. You can set most of the options with the YaST RMT Server module.

### 6.3.1 /etc/rmt.conf

The only supported way of doing the initial configuration is with **yast2 rmt** as described in *Section 2.4, "RMT configuration with YaST"*. Only the proxy configuration needs to be entered manually. The other configuration parameters are documented for reference.

All available configuration options can be found in the /etc/rmt.conf file.

#### 6.3.1.1 Mirroring settings

The mirroring section lets you adjust mirroring behavior.

##### mirror\_src

Decides whether to mirror source RPM packages (architecture is src).

##### dedup\_method

Creates hard links during mirroring when set to hardlink. If the file system does not support hard links, it can be set to copy instead. Possible values: hardlink, copy.

#### 6.3.1.2 HTTP client settings

The http\_client section defines the global HTTP connection settings of RMT.

#### verbose

Enables additional debug output to the systemd journal.

#### proxy

The proxy server URL including the protocol and the port number. For example: http://proxy\_url:8080.

#### noproxy

A list of domains that should *not* go through the proxy, separated by commas. For example: localhost,.mylocaldomain.

#### proxy\_auth

This setting determines the proxy authentication mechanism. Possible values are: none, basic, digest, gssnegotiate, ntlm, digest\_ie, ntlm\_wb.

#### proxy\_user

The proxy server user name.

#### proxy\_password

The proxy server password.

#### low\_speed\_limit

Lower speed limit when a download should be aborted in bytes/sec.

#### low\_speed\_time

Time until a download gets aborted, when download speed is below low\_speed\_limit.

### 6.3.1.3 Settings for accessing SUSE repositories

The scc section contains your mirroring credentials for contacting the SUSE Customer Center. To obtain your mirroring credentials, see [Section 4.1, "Mirroring credentials"](#).

Valid configuration keys for the section are:

#### username

Mirroring credentials user name.

#### password

Mirroring credentials password.

### 6.3.1.4 Web server settings

The `web_server` section lets you tune the performance of your RMT server.

#### min\_threads

Specifies the minimum number of threads that an RMT server worker should spawn.  
Acceptable values: Integer greater than or equal to 1.

#### max\_threads

Specifies the maximum number of threads that an RMT server worker should spawn.  
Acceptable values: Integer greater than or equal to 1.

#### workers

Specifies the number of Web workers for RMT.  
Acceptable values: Integer greater than or equal to 1.

## 6.3.2 SSL certificates and HTTPS

By default access to API endpoints consumed by **SUSEConnect** is limited to HTTPS only. nginx is configured to use an SSL certificate and a private key from the following locations:

- Certificate: `/etc/rmt/ssl/rmt-server.crt`
- Private key: `/etc/rmt/ssl/rmt-server.key`

The YaST RMT module generates a custom certificate authority which is used to sign HTTPS certificates. This means that to register, this certificate authority must be trusted by the client machines:

- For registrations during installation from the media or with YaST Registration module, a message will appear, prompting to trust the server certificate.
- For registering a client system on the command line, use the **`rmt-client-setup`** script. For details, see [Section 5.3, "Configuring clients with `rmt-client-setup`"](#).

## 7 Backing up an RMT server

This chapter explains how to create a backup of your RMT server and how to restore it.

### 7.1 Creating a backup

This procedure details how to create a full backup of your RMT server. It is assumed that you have an external disk or network share mounted in `/mnt/backup` which serves as a target for the backup.

1. Change to the backup directory.

```
# cd /mnt/backup
```

2. Create a file containing a dump of your SQL database. You need to provide the password you set for the `rmt` database user during the installation.

```
# mysqldump -u rmt -p rmt > rmt_backup.sql
```

3. Optionally, create a copy of your mirrored data.

```
# mkdir repos  
# rmt-cli export repos ./repos/
```

### 7.2 Restoring a backup

This procedure details how to restore your RMT server from a backup created in [Section 7.1, "Creating a backup"](#). It is assumed that the backup is mounted in `/mnt/backup`. It is also assumed that you are restoring the server on a newly installed SLES.

1. Install and configure the RMT server as described in [Chapter 2, RMT installation and configuration](#).
2. Go to the backup directory.

```
# cd /mnt/backup/
```

3. Use `mysql` to remove the newly created database and import the data.



```
# mysql -u rmt -p
Enter password:
Welcome to the MariaDB monitor.  Commands end with ; or \g.
[...]

MariaDB [(none)]> DROP DATABASE rmt;
Query OK, 14 rows affected (0.84 sec)

MariaDB [(none)]> CREATE DATABASE rmt;
Query OK, 1 row affected (0.00 sec)

MariaDB [(none)]> use rmt;
Database changed

MariaDB [rmt]> source rmt_backup.sql;
[...]

MariaDB [rmt]> quit
```

4. Optionally, import the exported repositories.

```
# rmt-cli import repos ./repos/
```

5. Synchronize your data and update your repositories.

```
# rmt-cli sync
# rmt-cli mirror
```

## 8 Managing TLS/SSL certificates

### 8.1 Regenerating HTTPS certificates

HTTPS certificates should be regenerated before they expire or to include additional common alternative names. No additional actions are required on the client machines registered to RMT server if only HTTPS certificates are regenerated.

1. Stop nginx and rmt-server services:

```
# systemctl stop nginx
# systemctl stop rmt-server
```

2. Remove previously generated certificates.

```
# rm /etc/rmt/ssl/rmt-server.*
```

3. Run the **yast rmt** module as described in [Section 2.4, "RMT configuration with YaST"](#).

### 8.2 Regenerating CA certificates and HTTPS certificates

CA certificates can be regenerated after they have expired or in case of security issues.



#### Warning: Import CA certificate on all clients

The newly generated CA certificate must be imported on all clients registered to the RMT server. This can be done by running the **rmt-client-setup** script on the client machines as described in [Section 5.3, "Configuring clients with rmt-client-setup"](#).

1. Stop nginx and rmt-server services.

```
# systemctl stop nginx
# systemctl stop rmt-server
```

2. Remove previously generated CA and HTTPS certificates.

```
# rm /etc/rmt/ssl/rmt-ca.*
```

```
# rm /etc/rmt/ssl/rmt-server.*
```

3. Run the `yast rmt` module as described in [Section 2.4, "RMT configuration with YaST"](#).

# A GNU licenses

## This appendix contains the GNU Free Documentation License version 1.2.

### GNU Free Documentation License

Copyright (C) 2000, 2001, 2002 Free Software Foundation, Inc. 51 Franklin St, Fifth Floor, Boston, MA 02110-1301 USA. Everyone is permitted to copy and distribute verbatim copies of this license document, but changing it is not allowed.

#### 0. PREAMBLE

The purpose of this License is to make a manual, textbook, or other functional and useful document "free" in the sense of freedom: to assure everyone the effective freedom to copy and redistribute it, with or without modifying it, either commercially or non-commercially. Secondly, this License preserves for the author and publisher a way to get credit for their work, while not being considered responsible for modifications made by others.

This License is a kind of "copyleft", which means that derivative works of the document must themselves be free in the same sense. It complements the GNU General Public License, which is a copyleft license designed for free software.

We have designed this License to use it for manuals for free software, because free software needs free documentation: a free program should come with manuals providing the same freedoms that the software does. But this License is not limited to software manuals; it can be used for any textual work, regardless of subject matter or whether it is published as a printed book. We recommend this License principally for works whose purpose is instruction or reference.

#### 1. APPLICABILITY AND DEFINITIONS

This License applies to any manual or other work, in any medium, that contains a notice placed by the copyright holder saying it can be distributed under the terms of this License. Such a notice grants a world-wide, royalty-free license, unlimited in duration, to use that work under the conditions stated herein. The "Document", below, refers to any such manual or work. Any member of the public is a licensee, and is addressed as "you". You accept the license if you copy, modify or distribute the work in a way requiring permission under copyright law.

A "Modified Version" of the Document means any work containing the Document or a portion of it, either copied verbatim, or with modifications and/or translated into another language.

A "Secondary Section" is a named appendix or a front-matter section of the Document that deals exclusively with the relationship of the publishers or authors of the Document to the Document's overall subject (or to related matters) and contains nothing that could fall directly within that overall subject. (Thus, if the Document is in part a textbook of mathematics, a Secondary Section may not explain any mathematics.) The relationship could be a matter of historical connection with the subject or with related matters, or of legal, commercial, philosophical, ethical or political position regarding them.

The "Invariant Sections" are certain Secondary Sections whose titles are designated, as being those of Invariant Sections, in the notice that says that the Document is released under this License. If a section does not fit the above definition of Secondary then it is not allowed to be designated as Invariant. The Document may contain zero Invariant Sections. If the Document does not identify any Invariant Sections then there are none.

The "Cover Texts" are certain short passages of text that are listed, as Front-Cover Texts or Back-Cover Texts, in the notice that says that the Document is released under this License. A Front-Cover Text may be at most 5 words, and a Back-Cover Text may be at most 25 words.

A "Transparent" copy of the Document means a machine-readable copy, represented in a format whose specification is available to the general public, that is suitable for revising the document straightforwardly with generic text editors or (for images composed of pixels) generic paint programs or (for drawings) some widely available drawing editor, and that is suitable for input to text formatters or for automatic translation to a variety of formats suitable for input to text formatters. A copy made in an otherwise Transparent file format whose markup, or absence of markup, has been arranged to thwart or discourage subsequent modification by readers is not Transparent. An image format is not Transparent if used for any substantial amount of text. A copy that is not "Transparent" is called "Opaque".

Examples of suitable formats for Transparent copies include plain ASCII without markup, Texinfo input format, LaTeX input format, SGML or XML using a publicly available DTD, and standard-conforming simple HTML, PostScript or PDF designed for human modification. Examples of transparent image formats include PNG, XCF and JPG. Opaque formats include proprietary

formats that can be read and edited only by proprietary word processors, SGML or XML for which the DTD and/or processing tools are not generally available, and the machine-generated HTML, PostScript or PDF produced by some word processors for output purposes only.

The "Title Page" means, for a printed book, the title page itself, plus such following pages as are needed to hold, legibly, the material this License requires to appear in the title page. For works in formats which do not have any title page as such, "Title Page" means the text near the most prominent appearance of the work's title, preceding the beginning of the body of the text.

A section "Entitled XYZ" means a named subunit of the Document whose title either is precisely XYZ or contains XYZ in parentheses following text that translates XYZ in another language. (Here XYZ stands for a specific section name mentioned below, such as "Acknowledgements", "Dedications", "Endorsements", or "History".) To "Preserve the Title" of such a section when you modify the Document means that it remains a section "Entitled XYZ" according to this definition.

The Document may include Warranty Disclaimers next to the notice which states that this License applies to the Document. These Warranty Disclaimers are considered to be included by reference in this License, but only as regards disclaiming warranties: any other implication that these Warranty Disclaimers may have is void and has no effect on the meaning of this License.

#### 2. VERBATIM COPYING

You may copy and distribute the Document in any medium, either commercially or non-commercially, provided that this License, the copyright notices, and the license notice saying this License applies to the Document are reproduced in all copies, and that you add no other conditions whatsoever to those of this License. You may not use technical measures to obstruct or control the reading or further copying of the copies you make or distribute. However, you may accept compensation in exchange for copies. If you distribute a large enough number of copies you must also follow the conditions in section 3.

You may also lend copies, under the same conditions stated above, and you may publicly display copies.

#### 3. COPYING IN QUANTITY

If you publish printed copies (or copies in media that commonly have printed covers) of the Document, numbering more than 100, and the Document's license notice requires Cover Texts, you must enclose the copies in covers that carry, clearly and legibly, all these Cover Texts: Front-Cover Texts on the front cover, and Back-Cover Texts on the back cover. Both covers must also clearly and legibly identify you as the publisher of these copies. The front cover must present the full title with all words of the title equally prominent and visible. You may add other material on the covers in addition. Copying with changes limited to the covers, as long as they preserve the title of the Document and satisfy these conditions, can be treated as verbatim copying in other respects.

If the required texts for either cover are too voluminous to fit legibly, you should put the first ones listed (as many as fit reasonably) on the actual cover, and continue the rest onto adjacent pages.

If you publish or distribute Opaque copies of the Document numbering more than 100, you must either include a machine-readable Transparent copy along with each Opaque copy, or state in or with each Opaque copy a computer-network location from which the general network-using public has access to download using public-standard network protocols a complete Transparent copy of the Document, free of added material. If you use the latter option, you must take reasonably prudent steps, when you begin distribution of Opaque copies in quantity, to ensure that this Transparent copy will remain thus accessible at the stated location until at least one year after the last time you distribute an Opaque copy (directly or through your agents or retailers) of that edition to the public.

It is requested, but not required, that you contact the authors of the Document well before redistributing any large number of copies, to give them a chance to provide you with an updated version of the Document.

## 4. MODIFICATIONS

You may copy and distribute a Modified Version of the Document under the conditions of sections 2 and 3 above, provided that you release the Modified Version under precisely this License, with the Modified Version filling the role of the Document, thus licensing distribution and modification of the Modified Version to whoever possesses a copy of it. In addition, you must do these things in the Modified Version:

- A. Use in the Title Page (and on the covers, if any) a title distinct from that of the Document, and from those of previous versions (which should, if there were any, be listed in the History section of the Document). You may use the same title as a previous version if the original publisher of that version gives permission.
- B. List on the Title Page, as authors, one or more persons or entities responsible for authorship of the modifications in the Modified Version, together with at least five of the principal authors of the Document (all of its principal authors, if it has fewer than five), unless they release you from this requirement.
- C. State on the Title page the name of the publisher of the Modified Version, as the publisher.
- D. Preserve all the copyright notices of the Document.
- E. Add an appropriate copyright notice for your modifications adjacent to the other copyright notices.
- F. Include, immediately after the copyright notices, a license notice giving the public permission to use the Modified Version under the terms of this License, in the form shown in the Addendum below.
- G. Preserve in that license notice the full lists of Invariant Sections and required Cover Texts given in the Document's license notice.
- H. Include an unaltered copy of this License.
- I. Preserve the section Entitled "History", Preserve its Title, and add to it an item stating at least the title, year, new authors, and publisher of the Modified Version as given on the Title Page. If there is no section Entitled "History" in the Document, create one stating the title, year, authors, and publisher of the Document as given on its Title Page, then add an item describing the Modified Version as stated in the previous sentence.
- J. Preserve the network location, if any, given in the Document for public access to a Transparent copy of the Document, and likewise the network locations given in the Document for previous versions it was based on. These may be placed in the "History" section. You may omit a network location for a work that was published at least four years before the Document itself, or if the original publisher of the version it refers to gives permission.
- K. For any section Entitled "Acknowledgements" or "Dedications", Preserve the Title of the section, and preserve in the section all the substance and tone of each of the contributor acknowledgements and/or dedications given therein.
- L. Preserve all the Invariant Sections of the Document, unaltered in their text and in their titles. Section numbers or the equivalent are not considered part of the section titles.
- M. Delete any section Entitled "Endorsements". Such a section may not be included in the Modified Version.
- N. Do not retitle any existing section to be Entitled "Endorsements" or to conflict in title with any Invariant Section.
- O. Preserve any Warranty Disclaimers.

If the Modified Version includes new front-matter sections or appendices that qualify as Secondary Sections and contain no material copied from the Document, you may at your option designate some or all of these sections as invariant. To do this, add their titles to the list of Invariant Sections in the Modified Version's license notice. These titles must be distinct from any other section titles.

You may add a section Entitled "Endorsements", provided it contains nothing but endorsements of your Modified Version by various parties—for example, statements of peer review or that the text has been approved by an organization as the authoritative definition of a standard.

You may add a passage of up to five words as a Front-Cover Text, and a passage of up to 25 words as a Back-Cover Text, to the end of the list of Cover Texts in the Modified Version. Only one passage of Front-Cover Text and one of Back-Cover Text may be added by (or through arrangements made by) any one entity. If the Document already includes a cover text for the same cover, previously added by you or by arrangement made by the same entity you are acting on behalf of, you may not add another; but you may replace the old one, on explicit permission from the previous publisher that added the old one.

The author(s) and publisher(s) of the Document do not by this License give permission to use their names for publicity for or to assert or imply endorsement of any Modified Version.

## 5. COMBINING DOCUMENTS

You may combine the Document with other documents released under this License, under the terms defined in section 4 above for modified versions, provided that you include in the combination all of the Invariant Sections of all of the original documents, unmodified, and list them all as Invariant Sections of your combined work in its license notice, and that you preserve all their Warranty Disclaimers.

The combined work need only contain one copy of this License, and multiple identical Invariant Sections may be replaced with a single copy. If there are multiple Invariant Sections with the same name but different contents, make the title of each such section unique by adding at the end of it, in parentheses, the name of the original author or publisher of that section if known, or else a unique number. Make the same adjustment to the section titles in the list of Invariant Sections in the license notice of the combined work.

In the combination, you must combine any sections Entitled "History" in the various original documents, forming one section Entitled "History"; likewise combine any sections Entitled "Acknowledgements", and any sections Entitled "Dedications". You must delete all sections Entitled "Endorsements".

## 6. COLLECTIONS OF DOCUMENTS

You may make a collection consisting of the Document and other documents released under this License, and replace the individual copies of this License in the various documents with a single copy that is included in the collection, provided that you follow the rules of this License for verbatim copying of each of the documents in all other respects.

You may extract a single document from such a collection, and distribute it individually under this License, provided you insert a copy of this License into the extracted document, and follow this License in all other respects regarding verbatim copying of that document.

## 7. AGGREGATION WITH INDEPENDENT WORKS

A compilation of the Document or its derivatives with other separate and independent documents or works, in or on a volume of a storage or distribution medium, is called an "aggregate" if the copyright resulting from the compilation is not used to limit the legal rights of the compilation's users beyond what the individual works permit. When the Document is included in an aggregate, this License does not apply to the other works in the aggregate which are not themselves derivative works of the Document.

If the Cover Text requirement of section 3 is applicable to these copies of the Document, then if the Document is less than one half of the entire aggregate, the Document's Cover Texts may be placed on covers that bracket the Document within the aggregate, or the electronic equivalent of covers if the Document is in electronic form. Otherwise they must appear on printed covers that bracket the whole aggregate.

## 8. TRANSLATION

Translation is considered a kind of modification, so you may distribute translations of the Document under the terms of section 4. Replacing Invariant Sections with translations requires special permission from their copyright holders, but you may include translations of some or all Invariant Sections in addition to the original versions of these Invariant Sections. You may include a translation of this License, and all the license notices in the Document, and any Warranty Disclaimers, provided that you also include the original English version of this License and the original versions of those notices and disclaimers. In case of a disagreement between the translation and the original version of this License or a notice or disclaimer, the original version will prevail.

If a section in the Document is Entitled "Acknowledgements", "Dedications", or "History", the requirement (section 4) to Preserve its Title (section 1) will typically require changing the actual title.

## 9. TERMINATION

You may not copy, modify, sublicense, or distribute the Document except as expressly provided for under this License. Any other attempt to copy, modify, sublicense or distribute the Document is void, and will automatically terminate your rights under this License. However, parties who have received copies, or rights, from you under this License will not have their licenses terminated so long as such parties remain in full compliance.

## 10. FUTURE REVISIONS OF THIS LICENSE

The Free Software Foundation may publish new, revised versions of the GNU Free Documentation License from time to time. Such new versions will be similar in spirit to the present version, but may differ in detail to address new problems or concerns. See <https://www.gnu.org/copyleft/>.

Each version of the License is given a distinguishing version number. If the Document specifies that a particular numbered version of this License "or any later version" applies to it, you have the option of following the terms and conditions either of that specified version or of any later version that has been published (not as a draft) by the Free Software Foundation. If the Document does not specify a version number of this License, you may choose any version ever published (not as a draft) by the Free Software Foundation.

### ADDENDUM: How to use this License for your documents

```
Copyright (c) YEAR YOUR NAME.
Permission is granted to copy, distribute and/or modify this document
under the terms of the GNU Free Documentation License, Version 1.2
or any later version published by the Free Software Foundation;
with no Invariant Sections, no Front-Cover Texts, and no Back-Cover Texts.
A copy of the license is included in the section entitled "GNU
Free Documentation License".
```

If you have Invariant Sections, Front-Cover Texts and Back-Cover Texts, replace the "with...Texts." line with this:

```
with the Invariant Sections being LIST THEIR TITLES, with the
Front-Cover Texts being LIST, and with the Back-Cover Texts being LIST.
```

If you have Invariant Sections without Cover Texts, or some other combination of the three, merge those two alternatives to suit the situation.

If your document contains nontrivial examples of program code, we recommend releasing these examples in parallel under your choice of free software license, such as the GNU General Public License, to permit their use in free software.